

# Ship Traffic Analysis on the NSR and Development of the NSR's Transport and Logistics System



**Dr. Bjørn Gunnarsson**

**Associate Professor**

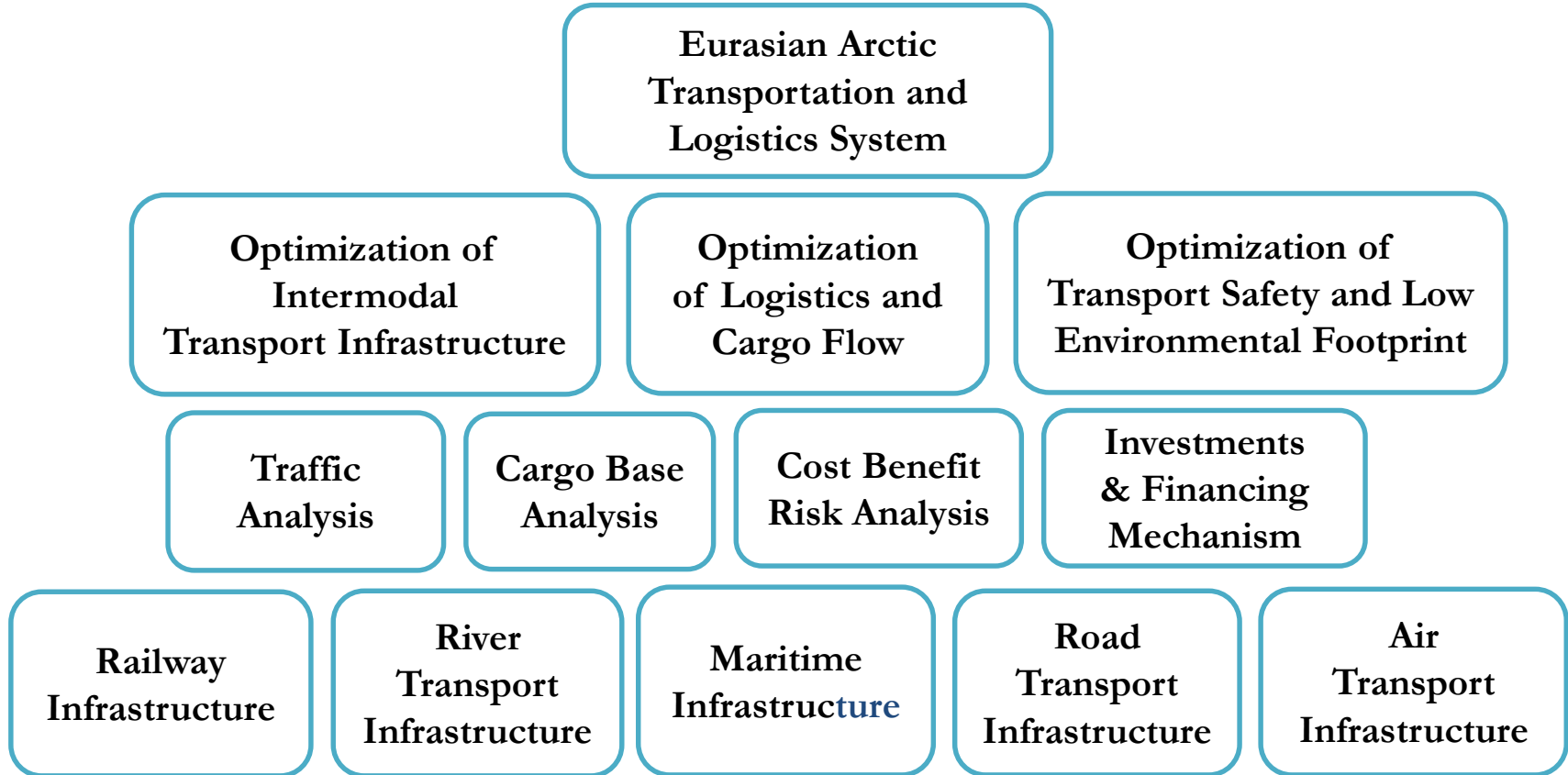
**Centre for High North Logistics (CHNL)**

**Nord University Business School, Bodø, Norway**

**[bjorn.gunnarsson@nord.no](mailto:bjorn.gunnarsson@nord.no)**

Northern Dimension Future Forum on Transport: Emerging Trade Routes between Europe and Asia  
November 20, 2018, Thon Hotel EU, Brussels, Belgium

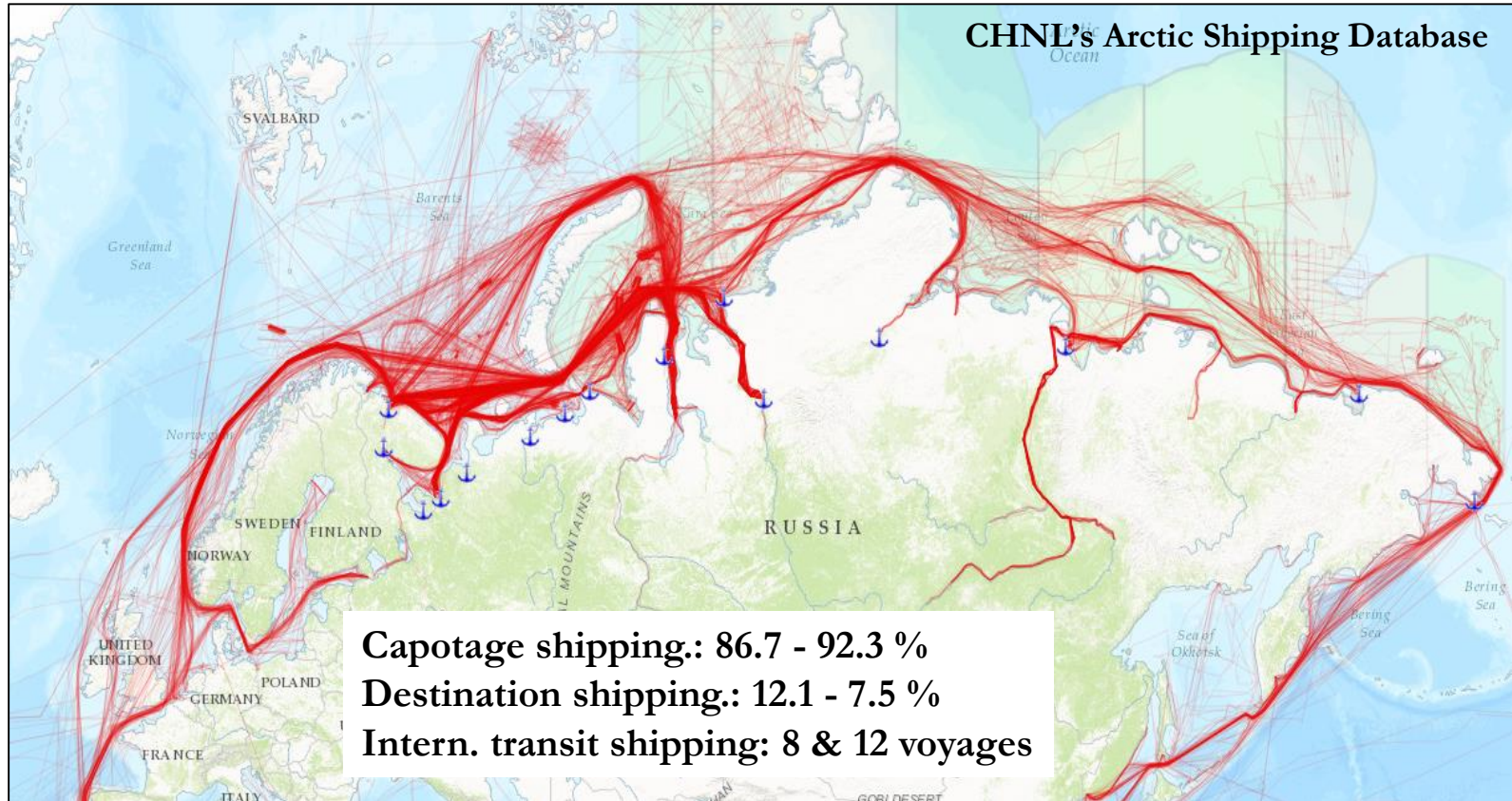
# System's Approach to Arctic Logistics



# Inventory of Infrastructure on the NSR



# Ship Traffic Analysis on the NSR 2016-2017





# Some NSR Transport Statistics 2016-2017

**Number of vessels:  
297 and 283**

**Number of voyages:  
1,705 and 1,908**

**Vessels of less than  
5000 GRT:  
43% and 50%**

**Vessels with no or  
weak ice-class:  
41.0% and 47.4%**

**Number of shipping  
companies:  
129 and 121**

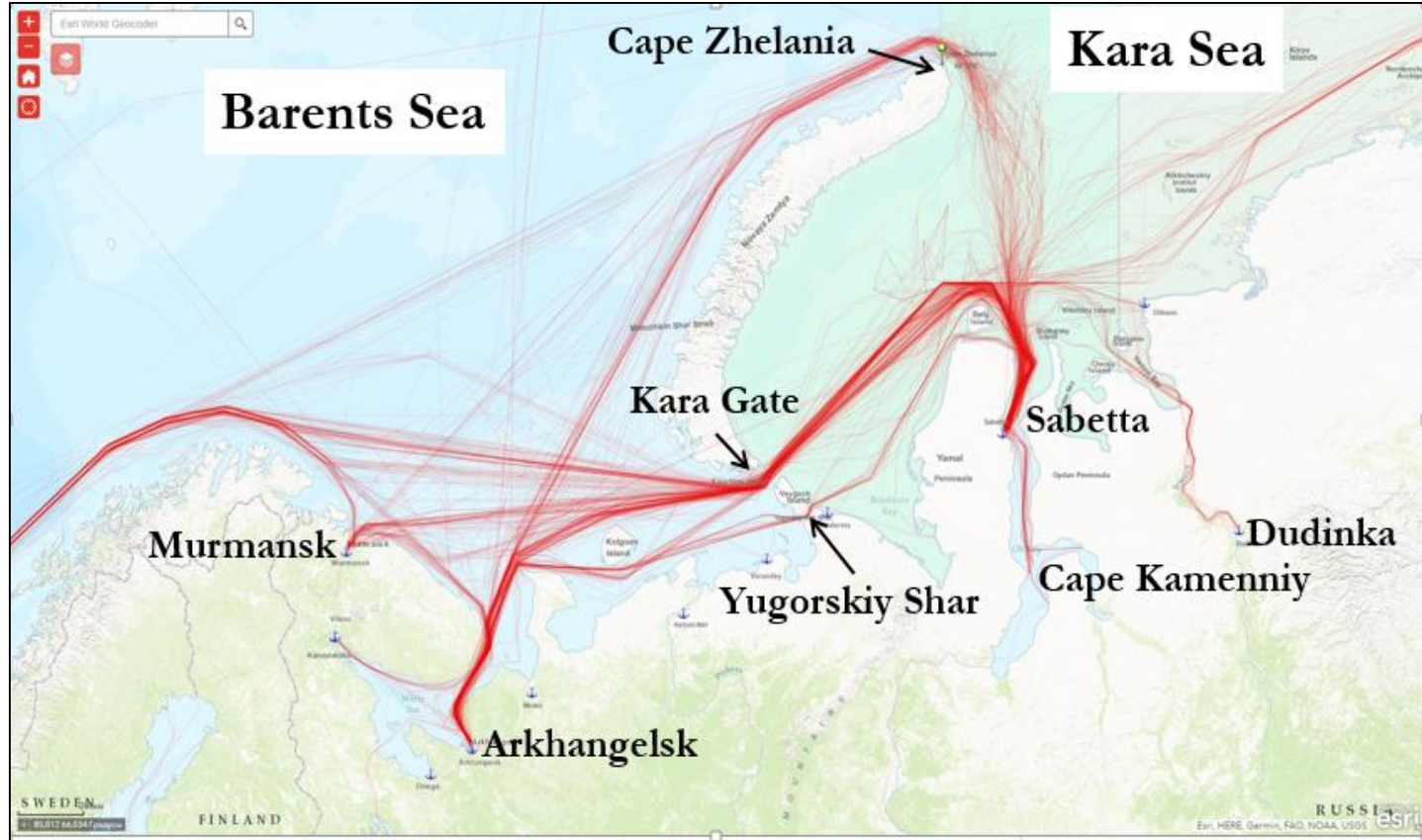
**Number of Non-  
Russian companies:  
54 and 47**

**Voyages made by  
Russian vessels:  
70% and 81%**

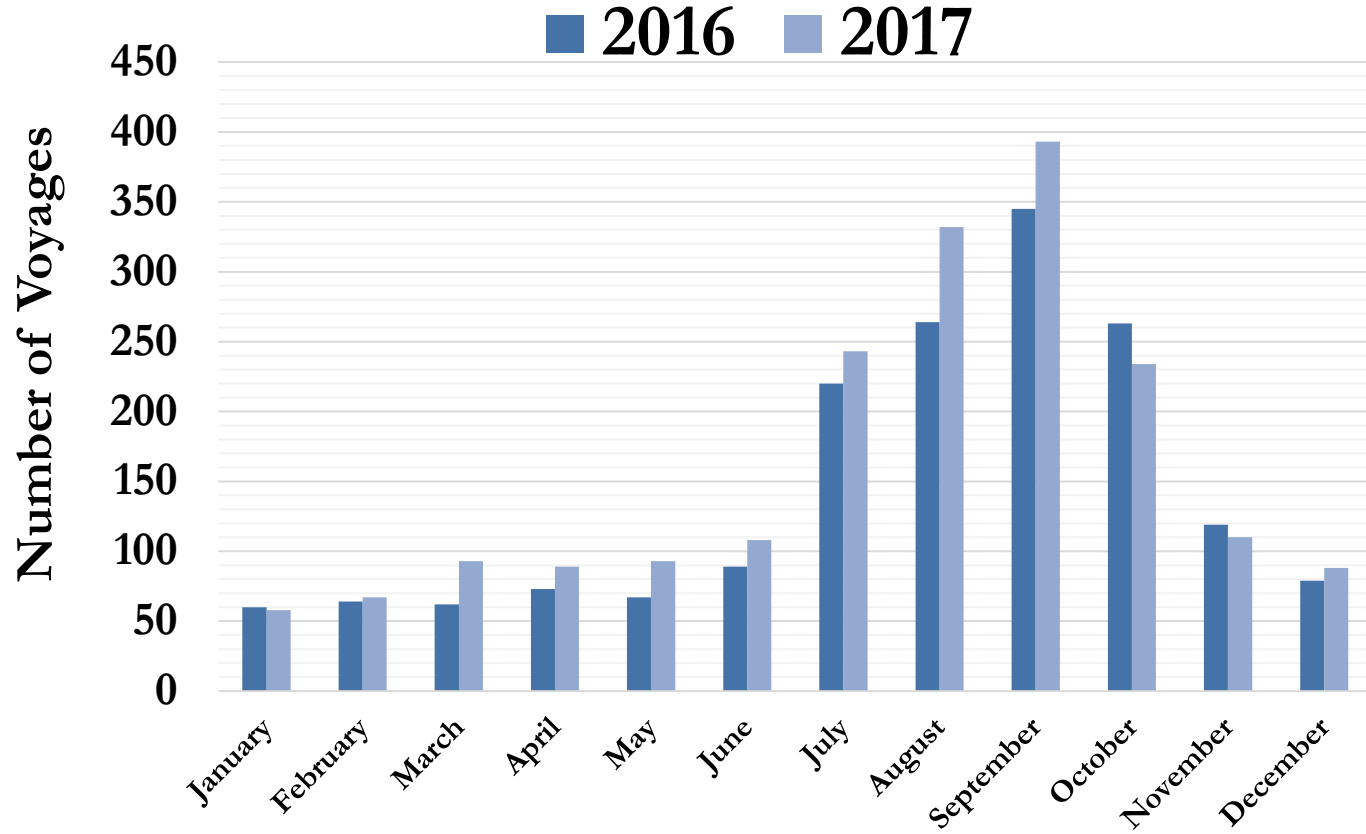
**Voyages from  
European ports  
to NSR:  
65 and 63**

**Voyages from Asian  
Pacific ports to NSR:  
39 and 12**

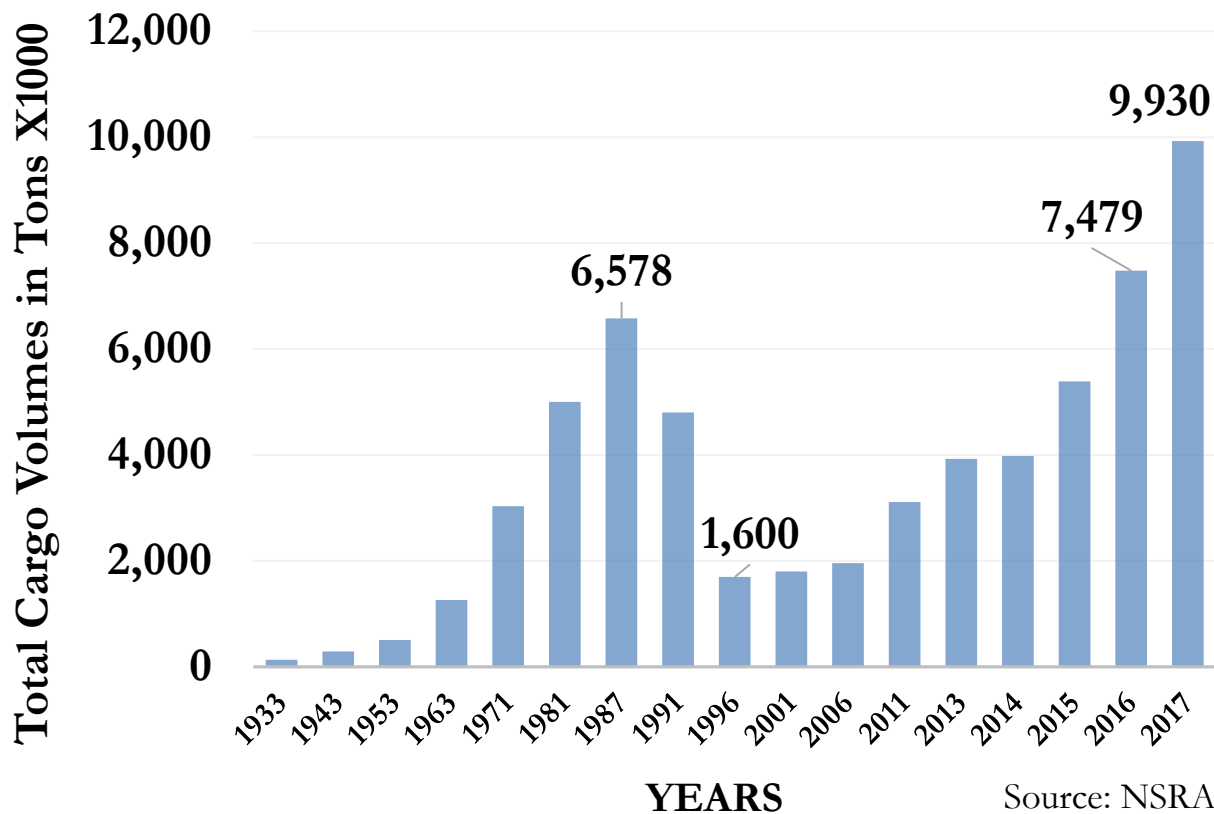
# SW Part of the Kara Sea



# Year-Round Shipping on the NSR



# Total Cargo Volumes on the NSR 1933-2017



Source: NSRA



# Three Modes of Maritime Transportation

## Capotage Shipping

Resupplying remote Arctic communities with goods

Transport oil, coal, metals and ore from remote locations

Geological and geophysical exploration of Arctic seas

Establishing and servicing energy and mining projects

Servicing and maintaining several new security/military bases

Modernization of existing Arctic ports and new port development

## Destination Shipping

Shipments of project cargo for large Arctic energy and mining projects

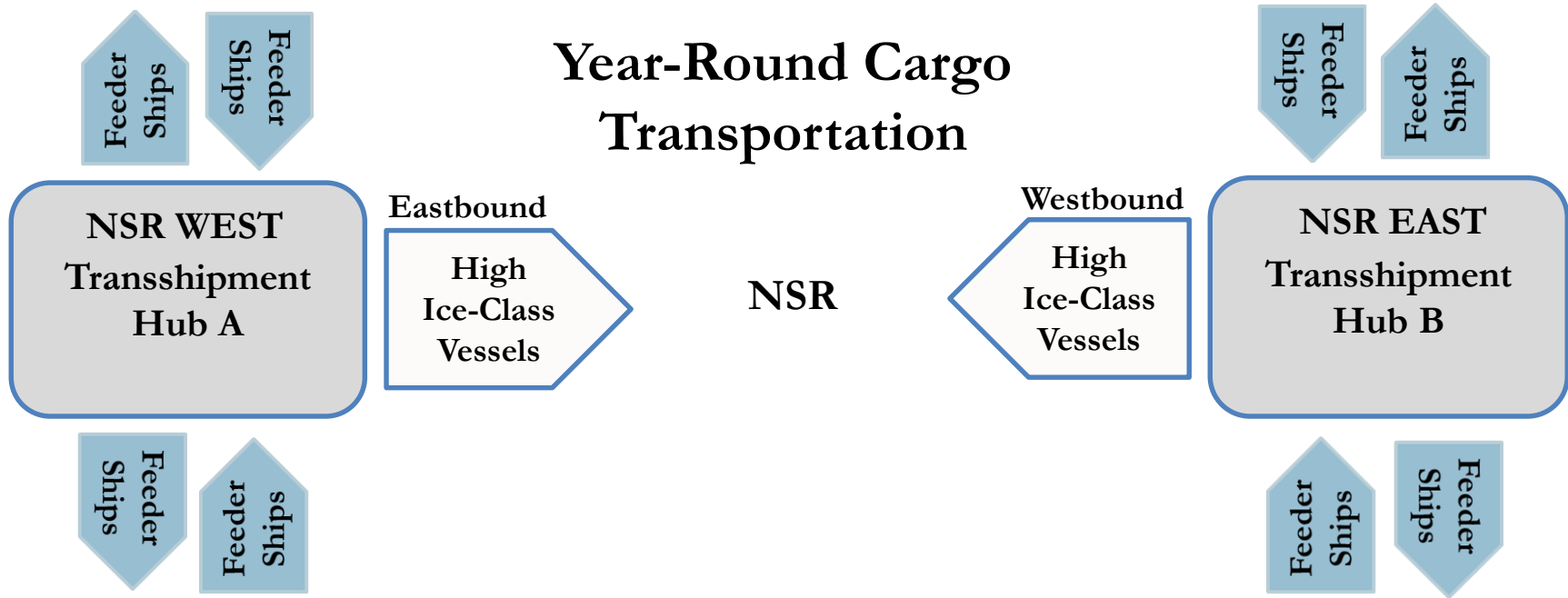
Transport of LNG from the Yamal LNG plant (to be replaced by capotage)

## Int. T. Shipping

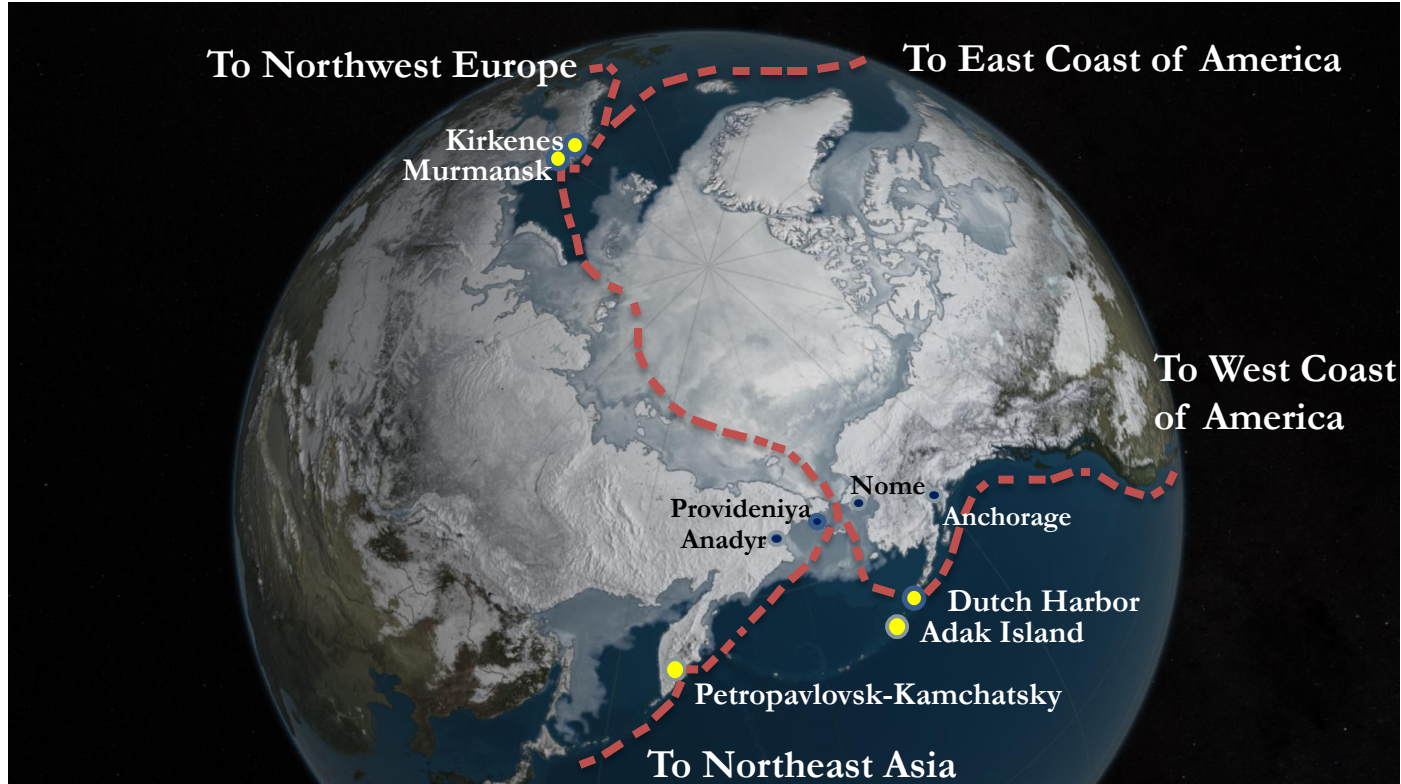
Demonstration voyages; repositioning of vessels

Transport of oil products and project cargo (e.g., windmill components); transport of coal and frozen fish/meat

# Arctic Transshipment Hubs



# NSR's Future Transshipment Hubs



An image of the Arctic sea ice on March 24, 2016 (maximum ice extent)

**Thank You!**

